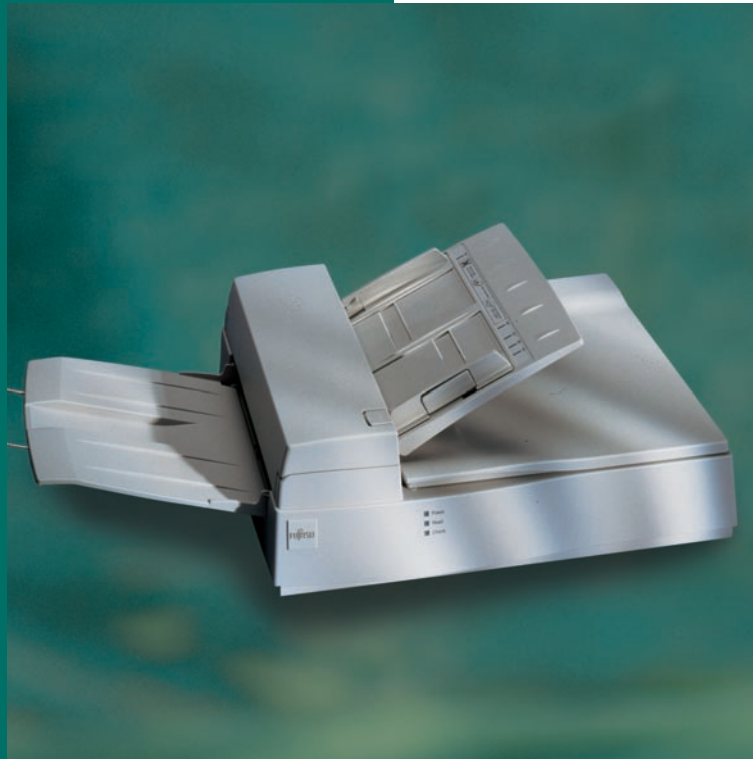


IMAGING



# Scanner

**M3093EX/GX**  
Departmental  
Document Scanner

A quality, high-performance simplex scanner designed for document imaging applications.

- Scan rates of 27 pages per minute
- Supports Fujitsu ScanRight™ image processing technology options for increased image quality
- Option slot for third-party boards
- Resolutions from 200 to 400 dpi and 256 steps of grayscale
- Flatbed and built-in, 50-page automatic document feeder
- Scans documents from 5.8" x 8.3" up to 8.5" x 11" in size
- TWAIN and ISIS® driver support for seamless application integration

The Fujitsu M3093EX/GX high-performance scanners deliver faster speed, advanced paper handling, true ease-of-integration and compatibility with hundreds of document imaging applications. What's more, the Fujitsu scanner's list of standard features includes built-in automatic document feeders for rapid unattended scanning of multi-page documents, and a flatbed for scanning books, bound reports and fragile originals.

### ScanRight™ Technology Makes It Better

The M3093EX/GX scanners add support for Fujitsu ScanRight image processing technology option, which can dramatically increase image quality through automatic separation and noise removal while providing specialized features such as image edge-enhancement and dynamic thresholding. Paper handling capability has been enhanced through an improved automatic document feeder design, which includes locking paper guides that help eliminate skewing. An internal options connector slot has also been added to the M3093EX providing connectivity for third-party options such as 256-step grayscale boards.

*Workgroup*

*Departmental*

*Production*

## Compatibility and Support

The M3093EX incorporates an RS-232/video interface widely used throughout the imaging industry. Alternatively, the M3093GX connects via a standard SCSI-II interface. Both include built-in emulation for their predecessors, ensuring continued compatibility with existing applications plus an upgrade path that extends throughout the Fujitsu group's entire line of world-class, document image scanners.

## Product Migration and Compatibility

- M3093EX scanners will run in emulation mode making them plug-and-play compatible with existing applications that currently support the M3093E scanners. However, new drivers are required to access the newer features.
- M3093GX scanners come installed with the standard 1MB compression board. The CMP-II board option is available to allow the scanner to use older legacy drivers.
- The Fujitsu ScanRight image processing option board is supported by certain versions of the video and SCSI tool kits from Kofax, Xionics/GGX, Dunord and Pixel Translations. Please check with these vendors for proper driver versions.

## Maximizes Your Up-Time

Fujitsu backs each M3093EX/GX series scanner with a 90-day on-site limited warranty. In addition, a free nine-month depot service upgrade is available to all customers who register their product within 90 days of purchase. For full details, visit [www.fcpa.fujitsu.com](http://www.fcpa.fujitsu.com) or call 1-800-626-4686. In addition, FCPA also offers the following service programs:

- **Basic On-Site Service Upgrade**  
Minimize downtime and maximize productivity with responsive, next-day on-site service.
- **ScanCare™ Preventative Maintenance**  
Industry leading service program that includes on-site coverage, consumable replacement, preventative maintenance, and operator training.
- **Advance Exchange Replacement Program**  
Whole unit replacement program that minimizes downtime. Alternative to on-site service.

Restrictions apply. For full details on all service programs, go to [www.fcpa.fujitsu.com](http://www.fcpa.fujitsu.com).

## About Fujitsu Computer Products of America, Inc.

Fujitsu Computer Products of America, Inc. is a wholly owned subsidiary of Fujitsu Limited, a leading provider of Internet-focused information technology solutions for the global marketplace. FCPA provides innovative solutions for the U.S. marketplace. Current product offerings include: high performance hard disk drives, magneto-optical drives and scanners.

M3093EX/GX Departmental Scanner Specifications			
Models	M3093EX		M3093GX
<b>Functional Specifications</b>			
Technology	Charge coupled device (CCD) image sensor		
Resolution	200, 240, 300, 400 dpi		
Halftone patterns	64-step and error diffusion		
Grayscale	256-levels via third-party slot	256-levels	
Scanning speed @ 200 dpi letter size	27 ppm		
Scanning mode	Simplex		
Document feeding mode	Automatic document feeder (ADF) and flatbed		
Emulation mode	M3093E		
ADF capacity	50 sheets		
Document Size	ADF minimum	5.8 in. x 8.3 in. (A5)	
	ADF maximum	8.5 in. x 14 in. (Legal)	
	Flatbed maximum	8.5 in. x 11 in. (Letter)	
Interface	RS-232/Video		SCSI-II
Software driver support			TWAIN, ISIS
<b>Physical Specifications</b>			
Power requirements (auto-switching)	110V/220V		
Operating environment	Temperature	5°C-35°C	
	Relative humidity	20%-80% (non-condensing)	
Power consumption	100 W or less		
Dimensions (HxWxD)	6.8 in. x 20.8 in. x 14.8 in.		
Weight	28.6 lbs.		
<b>Reliability Specifications</b>			
MTBF	10,000 hours		
MTTR	30 minutes		
Limited Warranty	3 months on-site <sup>1</sup>		
Options	ScanRight image processing board, ScanCare Service Program, ScanAid™ Consumable Kit		

<sup>1</sup> Customers who register their scanner within 90 days of purchase will receive a free nine-month depot service upgrade. For full details, visit [www.fcpa.fujitsu.com](http://www.fcpa.fujitsu.com) or call 1-800-626-4686.

©2002 Fujitsu Computer Products of America, Inc. All rights reserved. All statements herein are valid only in the U.S. for U.S. residents, are based on normal operating conditions, are provided for informational purposes only, and are not intended to create any express warranty or implied warranty of merchantability or fitness for a particular purpose. Fujitsu Computer Products of America, Inc. reserves the right to modify at any time without prior notice these statements, our products, their performance specifications, availability, price, and warranty and post-warranty programs. Fujitsu and the Fujitsu logo are registered trademarks of Fujitsu Ltd. ScanRight, ScanAid and ScanCare are trademarks of Fujitsu Computer Products of America, Inc. ISIS is a registered trademark of Pixel Translations, a Division of ActionPoint, Inc. All other trademarks are the property of their respective owners.



FUJITSU COMPUTER PRODUCTS OF AMERICA, INC.  
2904 Orchard Parkway,  
San Jose, CA 95134-2009  
(800) 626-4686  
(408) 432-6333  
Web site: <http://www.fcpa.fujitsu.com>  
Email: [info@fcpa.fujitsu.com](mailto:info@fcpa.fujitsu.com)